



## FAW Toyota Yize IZOA Car SUV with Maximum Torque Nm 200-300Nm and 360° Rear Camera

Our Product Introduction

for more products please visit us on [puyue-evcar.com](http://puyue-evcar.com)

### Basic Information

- Place of Origin: Japan
- Price: \$20,189.00/sets 1-4 sets
- Delivery Time: 45-60

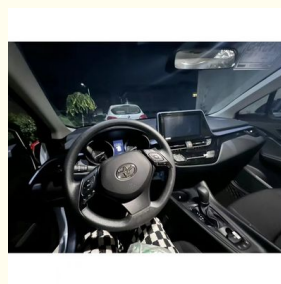


### Product Specification

- Steering: Left
- Emission Standard: Euro VI
- Year: 2023
- Month: 5
- Mileage: >100000 Miles
- Make: Toyota
- Model: SUV
- Maximum Power(Ps): 100-150Ps
- Maximum Torque(Nm): 200-300Nm
- Wheelbase: 2500-3000mm
- Number Of Seats: 5
- Front Suspension: Macpherson
- Rear Suspension: Multi-link
- Steering System: Electric
- Parking Brake: Electric

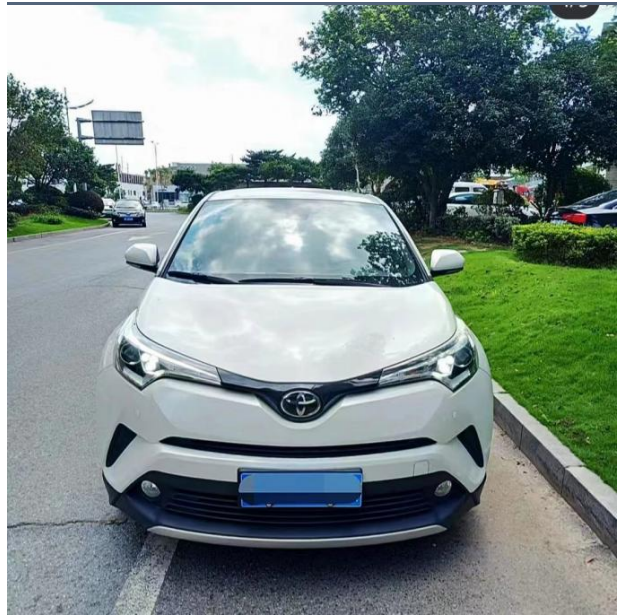


### More Images



Product Description

Product Description



Title goes here.  
Semi-Automatic PET Bottle Blowing  
Machine Bottle Making Machine Bottle  
Moulding Machine PET Bottle Making  
Machine is suitable for producing PET  
plastic containers and bottles in all  
shapes.



Specification

item	value
------	-------

Steering	Left
Emission Standard	Euro VI
Year	2023
Month	5
Mileage	>100000 Miles
Make	Toyota
	SUV
Place of Origin	Japan
Maximum Power(Ps)	100-150Ps
Maximum Torque(Nm)	200-300Nm
Wheelbase	2500-3000mm
Number of Seats	5
Front Suspension	Macpherson
Rear Suspension	Multi-link
Steering System	Electric
Parking Brake	Electric
Brake System	Front disc+Rear dsic
ABS(Antilock Braking System)	Yes
ESC(Electronic Stability Control System)	Yes
Radar	None
Rear Camera	360°
Sunroof	Sunroof
Steering Wheel	Multi-function
Seats Material	Fabric
Driver's Seat Adjustment	Manual
Copilot Seat Adjustment	Manual
Touch Screen	Yes
Headlight	LED

## Products Description

---



## < ABOUT US <



## TRANSPORTATION DISPLAY



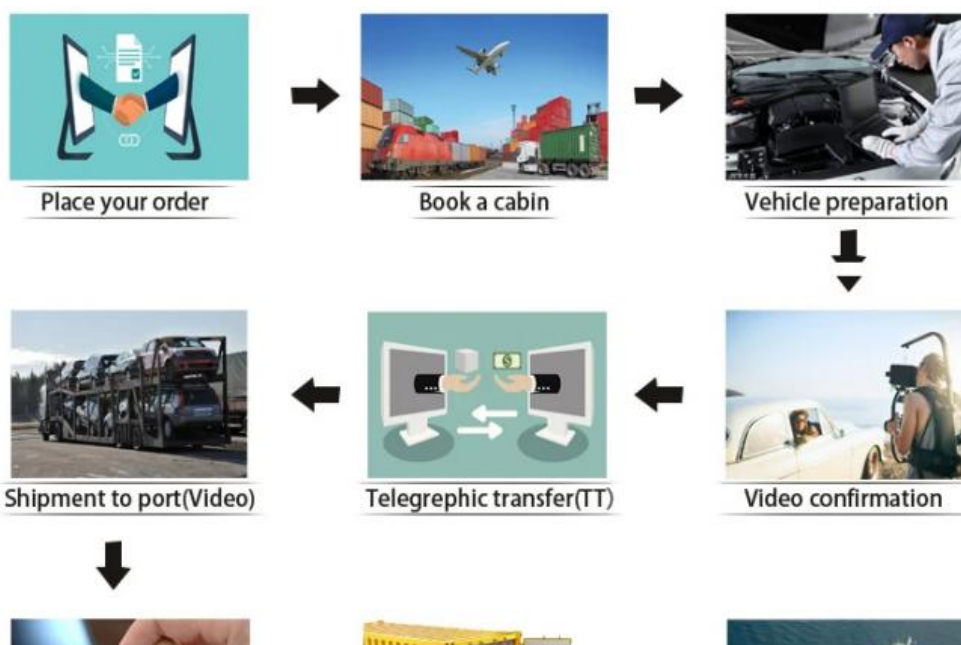
## < COMPANY CERTIFICATE <



## PRODUCTION LINE



## SHIPMENT PROCESS







## FAQ

**Q: Which brand of vehicles we can buy from your company?**

A: We provide BYD, Volkswagen, and any other brand you want.

**Q: What is your payment terms**

A: We accept T/T, Alipay, Western Union, Money Gram and other flexible payment terms.

**Q: What's your delivery time?**

A: If cars are in stock, the delivery time is within 7 working days after receiving the deposit. If not, it is within 15 working days after receiving the deposit.

**Q:What is your shipping method?**

A: Transport by sea, by trailer, rail via containers, LCL and RO-RO vessel according to your requirements. Meantime, we also provide the most economical method for you.

**Q: What if there are parts damaged, what should I do?**

A: Contact our sales team immediately. Each car comes with a one-year warranty. The tech department will solve the problem for you ASAP.

**Q How to place an order?**

A The procedure is like this:

- 1). Contact customer service to determine the freight and product model, configuration, quantity and other detailed information (you can also arrange freight forwarding by yourself);
- 2). We provide you with a proforma invoice according to your final decision, which contains all product details;
- 3). You need to arrange 30% of the payment to our bank account, and then we will prepare the product to start production (the cycle is commonly about 10 days, which can be shipped specifically for your order configuration quantity);
- 4). After the product is completed, the remaining payment is paid, and we arrange forwarder delivery (or we provide relevant information to arrange forwarder transportation by ourselves);
- 5). After completing this process, the customer service will track the product location and notify you when it is about to arrive and when it arrives, so that you can quickly prepare for customs clearance and other related issues.
- 6). After getting the items, there will be a dedicated after-sales team waiting for your follow-up feedback.



**Ya'an Puyue Automobile Service Co.,Ltd**



+8617746758436



puyue.bond@gmail.com



puyue-evcar.com

No. 78 Chama Avenue, Duoying Town, Yucheng District, Ya'an City, Sichuan Province