



2023 Geely Geometry E Firefly Left Hand i-Drive Electric Car 320Km Range and 5 Seats

Our Product Introduction

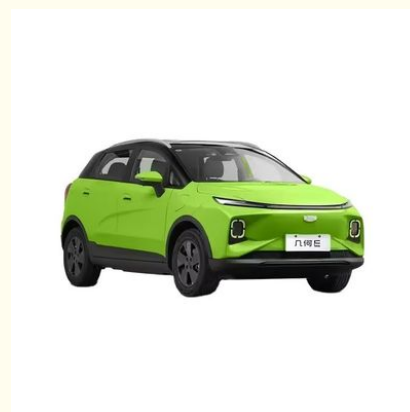
Basic Information

- Place of Origin: China
- Price: \$12,379.00/sets 1-4 sets
- Delivery Time: 45-60

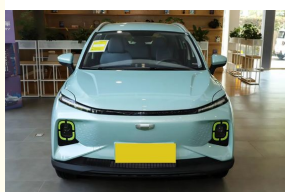


Product Specification

- Steering: Left
- Emission Standard: Euro IV
- Year: 2023
- Month: 2
- Mileage: 75001-100000 Miles
- Make: Geely
- Maximum Power(Ps): 100-150Ps
- Maximum Torque(Nm): 200-300Nm
- Wheelbase: 2000-2500mm
- Number Of Seats: 5
- Front Suspension: Macpherson
- Rear Suspension: Multi-link
- Steering System: Electric
- Parking Brake: Electric
- Brake System: Front Disc+Rear Dsic



More Images



for more products please visit us on puyue-evcar.com

Product Description



Specification

item	value
Steering	Left
Emission Standard	Euro IV
Year	2023
Month	2
Mileage	75001-100000 Miles
Make	geely
Place of Origin	China
Maximum Power(Ps)	100-150Ps
Maximum Torque(Nm)	200-300Nm
Wheelbase	2000-2500mm
Number of Seats	5
Front Suspension	Macpherson
Rear Suspension	Multi-link
Parking Brake	Electric
Brake System	Front disc+Rear dsic
ABS(Antilock Braking System)	Yes
ESC(Electronic Stability Control System)	Yes
Radar	Front 4+Rear 4
Rear Camera	360°

Sunroof	None
Steering Wheel	Multi-function
Seats Material	Leather
Driver's Seat Adjustment	Manual
Copilot Seat Adjustment	Electric
Touch Screen	Yes
Headlight	LED
Product Name	geely geometry E Firefly

Packing & Delivery



To better ensure the safety of your goods, professional, environmentally friendly, convenient and efficient packaging services will be provided.

FAQ

1. who are we?

We are based in Sichuan, China, start from 2017, sell to Eastern Asia(40.00%), North America(40.00%), South Asia(20.00%). There are total about null people in our office.

2. how can we guarantee quality?

Always a pre-production sample before mass production;
Always final Inspection before shipment;

3. what can you buy from us?

auto parts, new energy auto parts

4. why should you buy from us not from other suppliers?

The manufacturer authorizes BYD and FAW Volkswagen brand distribution stores, which are supplied by BYD and FAW Volkswagen brand original accessories. Good accessory supply management and accessory adaptation services.

5. what services can we provide?

Accepted Delivery Terms: FOB, CIF, EXW
Accepted Payment Currency: null;
Accepted Payment Type: null;
Language Spoken: null

Manufacturing Technique

Company Profile

Meiya Company was established in 2000.

Over the past 20 years, through the unremitting efforts of all employees, it has successively built BYD Dynasty Network 4S stores, BYD Ocean Network 4S stores, FAW Volkswagen 4S stores, and Meiya Decoration Department into a multi brand 4S store that integrates car sales, car maintenance, original parts sales and services. The company's service radius continues to extend, the number of service targets continues to increase, and the quality of service continues to improve, It has now become a comprehensive automotive marketing service company with excellent reputation and the best quality in Ya'an City and even the Gan'aliang region.

Company structure:

Automotive Sales Department, Automotive Decoration Department, Automotive Aftersales Service Department, Automotive Testing Service Station.

Business philosophy:

Safety first, quality first, service first, and user first. Corporate spirit: leaving users' troubles and taking away the sincerity of the en.

Products Description



ABOUT US



TRANSPORTATION DISPLAY



COMPANY CERTIFICATE





PRODUCTION LINE



SHIPMENT PROCESS





FAQ

Q: Which brand of vehicles we can buy from your company?

A: We provide BYD, Volkswagen, and any other brand you want.

Q: What is your payment terms

A: We accept T/T, Alipay, Western Union, Money Gram and other flexible payment terms.

Q: What's your delivery time?

A: If cars are in stock, the delivery time is within 7 working days after receiving the deposit. If not, it is within 15 working days after receiving the deposit.

Q: What is your shipping method?

A: Transport by sea, by trailer, rail via containers, LCL and RO-RO vessel according to your requirements. Meantime, we also provide the most economical method for you.

Q: What if there are parts damaged, what should I do?

A: Contact our sales team immediately. Each car comes with a one-year warranty. The tech department will solve the problem for you ASAP.

Q How to place an order?

A The procedure is like this:

- 1). Contact customer service to determine the freight and product model, configuration, quantity and other detailed information (you can also arrange freight forwarding by yourself);
- 2). We provide you with a proforma invoice according to your final decision, which contains all product details;
- 3). You need to arrange 30% of the payment to our bank account, and then we will prepare the product to start production (the cycle is commonly about 10 days, which can be shipped specifically for your order configuration quantity);
- 4). After the product is completed, the remaining payment is paid, and we arrange forwarder delivery (or we provide relevant information to arrange forwarder transportation by ourselves);
- 5). After completing this process, the customer service will track the product location and notify you when it is about to arrive and when it arrives, so that you can quickly prepare for customs clearance and other related issues.
- 6). After getting the items, there will be a dedicated after-sales team waiting for your follow-up feedback.



Ya'an Puyue Automobile Service Co.,Ltd



+8617746758436



puyue.bond@gmail.com



puyue-evcar.com

No. 78 Chama Avenue, Duoying Town, Yucheng District, Ya'an City, Sichuan Province